



OHD LARGE TUB SERIES

By **UltraMatic Equipment Co.**



Made in USA

The leader in Vibratory Finishing since 1959

The Ultramatic OHD Large Tub Series are batch tub machines ranging in size up to 400 cubic feet processing capacity. Our *Patented Overhead Drive System* provides unparalleled vibratory energy. The result is any size part made can be processed in our OHD machines. (See OHD9696 article)



MODEL OHD 36144

OHD SERIES STANDARD FEATURES

- Patented O.H.D vibrator design
- Curved back wall tub
- Electrical control panel
- Auto grease lubrication
- TEFC motor
- Welded & stress relieved tub construction
- Removable drains

Available Options

- Compound Premix System
- Sound suppressor cover
- AC Frequency Variable Speed Drive
- Removable tub dividers
- Direct Drive
- Settling Tanks and Filtration Systems
- External media handling system

Some Items may be Optional on certain Models refer to quotation.

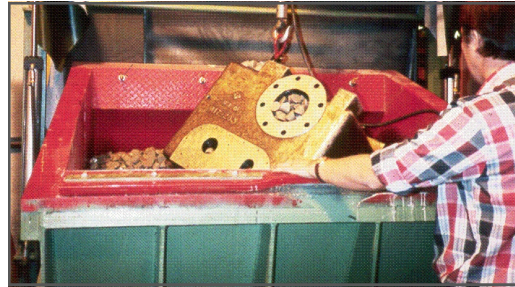
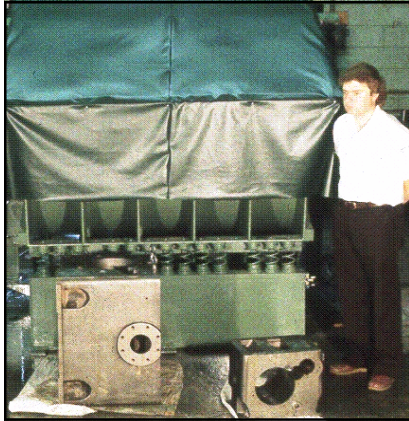
"S" Series Tubs denote U Shaped Configuration

All Models Not Listed Here • Special Size Tubs Available • Please Consult Factory

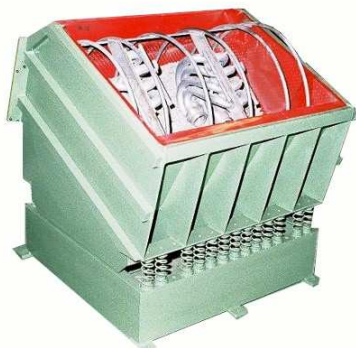
MODEL	CUBIC FT. (PROCESS)	TUB DIAMETER	TUB LENGTH	TUB LINING	MOTOR HP	SHIP WT. (lbs.)	OVERALL DIM. L x W
OHD 3696S	50	36"	96"	1.125"	20	7900	10' x 6'
OHD 36144	60	33"	142"	1"	30	10,200	15' x 6'
OHD 4080S	52	40"	80"	1.25"	20	7000	8' x 5'
OHD 40120	120	40"	120"	1.25"	50	10,000	12' x 8'
OHD 4860	50	48"	60"	1.25"	30	7600	7' x 8'
OHD 48144	140	48"	144"	1.25"	40	12,000	15' x 8'
OHD 6048	60	60"	48"	1.25"	40	8000	5' x 10'
OHD 60120S	170	60"	120"	1.50"	50	15,000	15' x 10'



OHD 36144 & OHD 30144 are combined in this "Dual Machine" custom system for a major aircraft company. Long aluminum wing spars are deburred using a ceramic media. Each tub has a screen separator to classify worn media before it lodges in the parts. The incline conveyor returns media to either tub via divert chute. *Ultramatic* has designed systems custom tailored to your floor space requirements and with improved productivity in mind since 1959.



MODEL OHD 4860 (4 ft. deep x 5 ft. long tub) 50 cubic foot batch tub deburring a heavy 1000 lb. fully machined, cast iron vacuum pump housing in ceramic media. The photo at the right is a closeup showing overhead hoist removing part from the media. No fixtures are required to process parts due to the patented O.H.D drive exclusively by *Ultramatic*. Longer tub lengths are available to process additional parts simultaneously.



OHD 4860 RUNNING A FIXTURED PART
TUB SIZE 4 FOOT X 5 FOOT WIDE



MODEL OHD 4860 FEATURES CURVED
REAR WALL LOW FRONT STANDARD

UltraMATIC EQUIPMENT CO.
848 S. Westgate Drive
Addison, IL. 60101



PHONE: (630) 543-4565
FAX: (630) 543-4569
www.ultramatic-equipment.com

Literature # OHD 400



OHD 9696 Tub Finishing Machine and Material Handling System with Sound Enclosure Room. System runs at 80 dbA

Jet Engine Parts

Tub Divider For 8 Foot Wide Tub

Under the Sound Enclosure is the massive Tub which measures 8 Feet wide by 8 Feet Deep. It is the largest diameter tub ever successfully built in the world. It's just another of our successful stories at Ultramatic.

Operator Work Platform Control Station



Photo to the left shows the OHD 9696 Tub with Removable Divider having the Media unloaded using the Automated Material Handling System. It consists of a Vibratory Screener for media sizing, Conveyor for transfer to a Storage Hopper, and a Return Conveyor back to the Vibratory Machine.

MODEL OHD 48144 has a tub dimension of 4 ft. deep x 12 ft. long and a process capacity of 140 cubic feet. The part is 8 ft. in length x 3 ft. wide fully machined titanium aircraft bulkhead. .008 radius in 90 minutes replaced the previous method of 60 hours of hand deburring. This machine holds 12,000 lbs. of ceramic media.

