



GLOBAL FINISHING SOLUTIONS

Accessories

Paint Booth Parts and Components

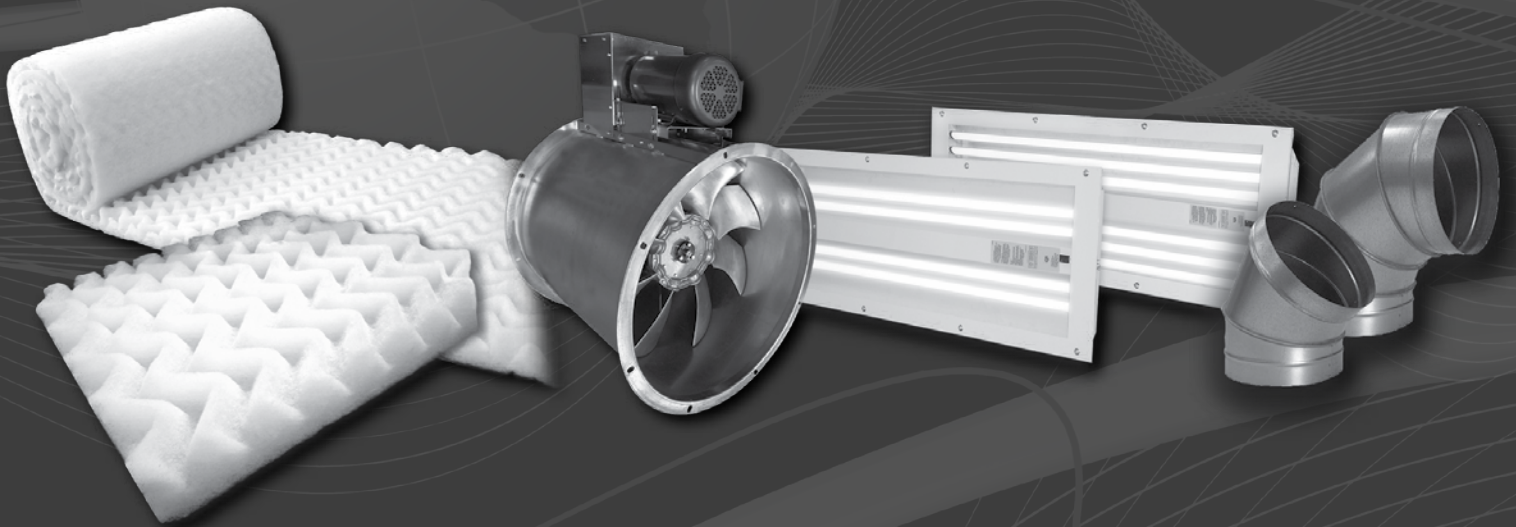


Table of Contents

FILTERS	5 - 8
DOORS	9 - 11
ELECTRICAL	12
LIGHTING	13 - 14
MOTORS	15
FANS	16 - 18
DUCTWORK	19 - 20
CONTROLS	21 - 22
PAINT BOOTH ACCESSORIES	23 - 26
WARRANTY	27

GFS PARTS & FILTERS DEPARTMENT

800-848-8738

email: parts@globalfinishing.com

fax: 888-338-4584

Global Finishing Solutions

FROM AMERICA'S HEARTLAND TO YOUR FRONT DOOR

With over 130 years of history, GFS' beginnings date back much further than any other manufacturer of paint booth environments. Our success comes from the amalgamation of North America's most significant finishing equipment manufacturers, including Binks, Devilbiss and JBI. Global Finishing Solutions (GFS) designs and builds paint booths and finishing equipment of all sizes — from small bench booths to massive aircraft booths. A leader in the industry, GFS has completed installations of some of the most advanced aviation finishing environments in the world.

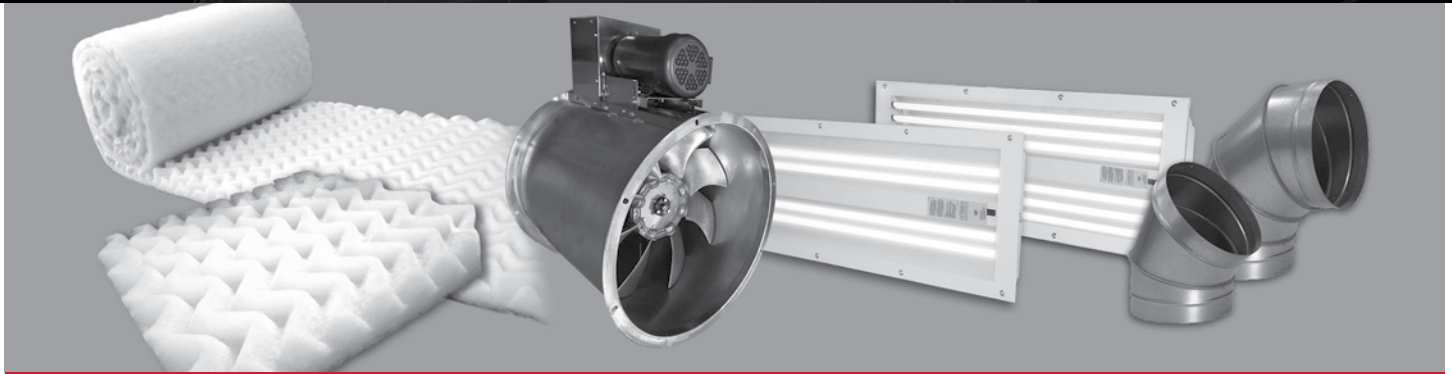


IN-HOUSE MANUFACTURING

All of GFS' products are fully designed and manufactured in our Osseo, Wisconsin facility. With more than 200,000 square feet of manufacturing space and state-of-the-art equipment, GFS has the capacity and talent to build our equipment from scratch. Virtually every part of our product line is built in shop, including the cabins, control panels, ductwork, lights and hinges.



Accessories



FULL SERVICE PARTS & FILTERS DEPARTMENT

GFS offers a full-service parts and filters department dedicated to providing top-quality replacement parts sourced from top-quality suppliers and are kept in stock for quick turnaround and fast shipping to virtually any location across North America and the world.

GFS' quest for product quality and performance has resulted in a complete line of accessories that have been designed and manufactured for durability and long-lasting, trouble-free service. Great emphasis is placed on our engineering and workmanship so that GFS customers receive the best products at competitive prices.

- Control Panels
- Doors
- Ductwork
- Electrical Components
- Fans
- Filters
- Filter Racks
- Grates and Pans
- Hardware
- Insulation
- Lighting
- Motors
- Oven Components
- Spray Booth Accessories
- Replacement Panels
- Miscellaneous Parts

GFS is the approved full-line supplier for ALL our heritage booths, systems, ovens, etc:

- DeVilbiss spray booths
- JBI booths and ovens
- Blu-Surf finishing systems
- Binks spray booths
- Milbanks finishing systems



GFS PARTS & FILTERS DEPARTMENT

800-848-8738

email: parts@globalfinishing.com

fax: 888-338-4584



Filters

GFS' exclusive line of exhaust filters, the WAVE filter is the most versatile single-stage filtration media made for paint booths. The unique convoluted surface creates maximum surface area and allows for exceptional depth loading. "Waves" capture and retain overspray within the media, reducing run-off.

- Exceptional paint holding capacity
- Designed to depth load
- Longer filter service life
- Minimizes particulate emissions



GFS LINE OF FILTERS

GFS WAVE FILTER



The original and most versatile, the GFS WAVE exhaust filter accommodates all paints and a wide array of spray applications, from clear to high solids.

- Particulate Removal Efficiency: 99.83%
- Holding Capability: 4.4 lbs
- Complies with the requirements of NFPA 33, OSHA and UL 900

Part No.	Description	Qty. Box
WAVE Pads		
FIL-EPP-2020-W	20" X 20"	30
FIL-EPP-2025-W	20" X 25"	30

Part No.	Description	Qty. Box
WAVE Rolls		
FIL-ERP-2030-W	20" X 30 Ft Roll	1
FIL-ERP-2430-W	24" X 30 Ft Roll	1
FIL-ERP-3024-W	30" X 24 Ft Roll	1
FIL-ERP-3030-W	30" X 30 Ft Roll	1
FIL-ERP-3050-W	30" X 50 Ft Roll	1
FIL-ERP-3630-W	36" X 30 Ft Roll	1
FIL-ERP-4030-W	40" X 30 Ft Roll	1
FIL-ERP-4530-W	45" X 30 Ft Roll	1
FIL-ERP-4548-W	45" X 48 Ft Roll	1
FIL-ERP-4830-W	48" X 30 Ft Roll	1
FIL-ERP-5430-W	54" X 30 Ft Roll	1
FIL-ERP-6030-W	60" X 30 Ft Roll	1
FIL-ERP-8016.5-W	80" X 16.5 Ft Roll	1
FIL-ERP-8020-W	80" X 20 Ft Roll	1

WAVE AQUA FILTER



The world's first waterborne paint booth filter, the WAVE Aqua filter is ideally suited for all automotive refinish waterborne coatings and medium-to-high viscosity industrial coatings.

- Particulate Removal Efficiency: 99.73%
- Holding Capability: 4.4 lbs
- Complies with the requirements of NFPA 33, OSHA and UL 900
- Meets and exceeds all requirements for EPA 6H testing and efficiency
- Designed to meet CR 66241.24 limitations.

Part No.	Description	Qty. Box
WAVE AQUA Pads		
FIL-EPP-2020-WA	20" X 20"	30
FIL-EPP-2025-WA	20" X 25"	30

Part No.	Description	Qty. Box
WAVE AQUA Rolls		
FIL-ERP-2030-WA	20" X 30 Ft Roll	1
FIL-ERP-2430-WA	24" X 30 Ft Roll	1
FIL-ERP-3024-WA	30" X 24 Ft Roll	1
FIL-ERP-3030-WA	30" X 30 Ft Roll	1
FIL-ERP-3050-WA	30" X 50 Ft Roll	1
FIL-ERP-3630-WA	36" X 30 Ft Roll	1
FIL-ERP-4030-WA	40" X 30 Ft Roll	1
FIL-ERP-4530-WA	45" X 30 Ft Roll	1
FIL-ERP-4548-WA	45" X 48 Ft Roll	1
FIL-ERP-4830-WA	48" X 30 Ft Roll	1
FIL-ERP-5430-WA	54" X 30 Ft Roll	1
FIL-ERP-6030-WA	60" X 30 Ft Roll	1
FIL-ERP-8020-WA	80" X 20 Ft Roll	1

Filters

EXHAUST FILTERS

High-Performance Polyester Media: Designed for high production applications. Features high capacity capture and high efficiency air pollution control. UL listed and Class 2 approved. Conforms to OSHA standards. 1" thickness.



Part No.	Description	Qty. Box
217-006*	20" X 20"	40
217-027	20" X 25"	25
217-041	24" X 24"	25
216-561	24" X 50 Ft Roll	1
216-562	48" X 50 Ft Roll	1
216-563	36" X 75 Ft Roll	1
216-564	48" X 75 Ft Roll	1
216-565	60" X 75 Ft Roll	1

"Gold" Polyester: Made from multi-layered, multi-density polyester. High efficiency and paint holding capacity make "Gold" the most cost-effective filter replacement media for any paint booth.



FIL-EPP-2020-G	20" X 20"	30
FIL-EPP-2025-G	20" X 25"	30
FIL-ERP-3050-G	30" x 50 Ft Roll	1
FIL-ERP-3650-G	36" x 50 Ft Roll	1
FIL-ERP-4550-G	45" x 50 Ft Roll	1
FIL-ERP-4850-G	48" x 50 Ft Roll	1
FIL-ERP-6050-G	60" x 50 Ft Roll	1

Fiberglass Media: Made from continuous filament glass fibers with an open weave pattern that allows particles to penetrate deep into the 2" thick pad and hold more paint. UL listed, Class 2 approved.



217-001	20" X 20"	100
217-002	20" X 25"	100
217-016*	40" X 75 Ft Roll	1
217-017	30" X 75 Ft Roll	1
217-019	42" X 75 Ft Roll	1
217-020	24" X 75 Ft Roll	1
217-021	36" X 75 Ft Roll	1
217-022	48" X 75 Ft Roll	1
217-023	60" X 75 Ft Roll	1
217-024	72" X 75 Ft Roll	1
217-025	84" X 75 Ft Roll	1
217-029	42" X 300 Ft Roll	1
217-080	60" X 300 Ft Roll	1
217-088	48" X 300 Ft Roll	1
217-089	84" X 300 Ft Roll	1
217-095	36" X 300 Ft Roll	1
217-510	48" X 250 Yds	1

Fiberglass Roll Media: High loft filtration with progressively denser layers makes these filters softer, easier to handle and far better at holding paint particles before they escape into the environment. 22-gram/square foot. UL listed, Class 2 approved.



500200	20" X 2.5" X 300'	1
500250	25" X 2.5" X 300'	1
500300	30" X 2.5" X 300'	1
500360	36" X 2.5" X 300'	1
500400	40.5" X 2.5" X 300'	1

INTAKE FILTERS

High Temperature Roll Media: Suitable for use with systems generating higher heat during the cure cycles. Polyester fiber is bonded with a polyvinyl chloride binder. Flame retardant is added.



Part No.	Description	Qty. Box
FMI-CUSTOM	By Sq. Foot	
FMI21036	21" X 36"	2
FMI21069	21" X 69"	2
FMI21072	21" X 72"	1
FMI21105	21" X 105"	2
FMI21141	21" X 141"	2
FMI21144	21" X 144"	2
FMI37036	37 1/2" X 36"	2
FMI37144	37 1/2" X 144"	2
FMI38062	38" X 62"	1
FMI51097	51" X 97"	1
FMI51108	51" X 108"	1
FMI51121	51" X 121"	2
FMI61120	61" X 120"	2
FMI61149	61" X 149"	2
FMI64108	64" X 108"	2
FMI64120	64" X 120"	2
FMI64144	64" X 144"	2
FMI64149	64" X 149"	2
FMI69097	69" X 97"	1
FMI69121	69" X 121"	1
FMI75030	75" X 30"	2
FMI75030	75" X 30"	2
FMI73069	73" X 69"	1
FMI73105	73" X 105"	1
FMI73141	73" X 141"	1
FMI69121	69" X 121"	1
FMI75036	75" X 36"	2
FMI75090	75" X 90"	2
FMI75120	75" X 120"	2
FMI75144	75" X 144"	2
FMI75149	75" X 149"	1
FMI78246	78 3/4" X 246"	1
FMI81036	81" X 36"	2
FMI81072	81" X 72"	1
FMI81108	81" X 108"	1
FMI81144	81" X 144"	1

Filters

INTAKE FILTERS

Intake Pads: These high-efficiency filters remove more than 90% of particles >5 microns. Features an internal welded steel frame for easy fit with self-sealing gasket. Internal wire support and heat-sealed seams prevent media flutter. UL listed, Class 2 approved.

Part No.	Description	Qty. Box
216-550	20" X 20" X 1" Diffusion	24
216-551	24" X 24" X 1" Diffusion	24
217-011	16" X 25" X 1" Diffusion	24
PF-1000	20" X 48"	12
PF-2000	20" X 48" Micro Clean	15

Tacky Media: This progressively structured, high-performance media is made from synthetic fibers, resin bonded with special adhesive. Pads feature an internal welded steel frame for easy fit with self-sealing gasket. UL listed, Class 2 approved.



217-010	16" X 20" X 1"	24
217-012	20" X 20" X 1"	24
217-012-Green	20" X 20" X 1"	24
217-013	20" X 24" X 1"	24
217-014	24" X 24" X 1"	24
216-234	55" X 96" Roll	2
216-237	55" X 120" Roll	2
216-528	50" X 90 Ft. Roll	1
216-531	50" X 30 Ft. Roll	1
217-200	20" X 48" X 2"	8

AdvanceCure Filters: Made of high-loft, non-woven, expanded polyester, with 99.84% average arrestance. Meet class 2 of the UL 900 classification. 10 filters per box.

ADV-4MW-FMI1116	10.875" X 16.25"
FMI-ACCT0811	10.5" X 7.75" Corner module, no lights
FMI-ACCT2671	13" X 9.5" Corner module, lights
FMI-ACO41811	15.25" X 24.25" Corner module
FMI-WBTA2362	17" X 7.5" X 5.25"
FMI-AC1515	14.625" x 14.626"
FMI-ACCT1637	15.5" X 36.625"



PAINT ARRESTOR - PAPER

Paper Mesh: These mesh filters are comprised of numerous layers of UL listed, Class 2 approved kraft media.



Part No.	Description	Qty. Box
216-088	20" X 20" X 1"	60
216-089	20" X 25" X 1"	70
216-095	42" X 2" X 30'	1
216-113	42" X 1-1/2" X 30'	1

Paper Mesh Polyester Backing: Highly efficient and known for their high paint holding capacity. Constructed of seven-layer expanded paper with white polyester backing.



EF-2020-K40	20" X 20" X 2"	40
EF-2025-K40	20" X 25" Pad	40
EF-3125-K2	31" X 25' Roll	2
EF-4253-K1	42" X 53' Roll	1

Pleated Cardboard: This unique collapsible pleated filter with round holes captures paint particles outside the air stream in the holding pockets.

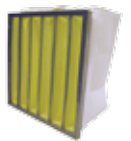


PEF-330	3' X 30'	(1/3/60 per box)
---------	----------	------------------

POWDER & DUST FILTERS

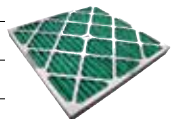
Bag Filters: Pocketed filters with individual pocket edges and internal dividing bars that are heat-sealed for no stitch holes. Exceptionally high dust-holding capacity provides long life.

216-504	20" X 20" X 15", 2 Pocket	1
216-505	20" X 20" X 12", 6 Pocket	1



Pad Filters: Medium-efficiency, pleated panel filters. Contain up to 16 pleats per linear foot. Radial pleat construction allows minimum pressure. Constructed of non-woven cotton/synthetic blend media. Available in UL listed, Class 2 or 1, in 4", 2" and 1" depths.

216-003	20" X 20" X 4"	6
216-011	20" X 20" X 2"	1
216-013	20" X 25" X 2"	1



Cartridge: For powder recovery booths and safe air dust collection systems.

216-202	26" X 12 3/4"	1
216-203	26" X 12 3/4"	1
216-204	26" X 12 3/4"	1

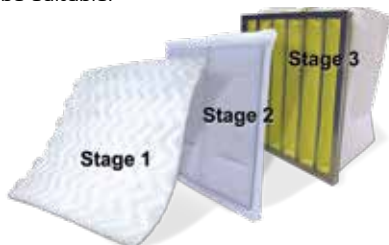


Filters

2 AND 3 STAGE FILTRATION

The three-stage filtration system is designed for the collection of aerospace primers and similar coatings that contain chromates, exceeding NESHAP requirements as tested by Method 319. Additionally, this system is proven effective for use in spray-to-waste powder coating applications and dust collection systems where cylindrical cartridges may not be suitable.

GFS' Stage 1 filters (CPA, WAVE, Versa 10) enhance the system's performance over the widest range of applications, while our Stage 2 filters (MEPT, Xtreme) provide optimum protection for the Stage 3 final filter.



Stage 1 - Roll Media

WAVE Aqua - Roll Media

Part No.	Description	Qty. Box
FIL-ERP-3630-WA	36" X 30'	1
FIL-ERP-4530-WA	45" X 30'	1
FIL-ERP-4830-WA	48" X 30'	1
FIL-ERP-5430-WA	54" X 30'	1
FIL-ERP-4548-WA	45" X 48'	1
FIL-ERP-3050-WA	30" X 50'	1

CPA - Paint Arrestor Roll Media

216-502	36" X 50'	1
216-503	45" X 50'	1
216-512	50" X 50'	1
216-532	72" X 50'	1
216-539	45" X 75'	1
216-541	102" X 75'	1
216-543	102" X 50'	1
216-547	54" X 75'	1

Stage 2 - MEPT Panel Filter

216-513	Xtreme 20" X 20"	24
216-501	20" X 20"	24
216-517	24" X 24"	24

Stage 3 - Pocket/Bag Filter

216-500	20" X 20" X 15", 2 Pocket	1
216-505	20" X 20" X 12", 6 Pocket	1
216-516	24" X 24" X 12", 6 Pocket	1

OVEN PANEL FILTERS

217-516 24" X 24" X 12", Wood Frame



217-518 24" X 24" X 12", Metal Frame



MULTI-FUNCTIONAL

Exhaust Pit and/or AMU

Part No.	Description	Qty. Box
33033	24" X 24" X 2"	4
405213	23 1/4" X 47" X 9", 6 Pocket	4
405214	23 1/2" X 47" Framed 5 Pocket	4
405216	19 1/4" X 37" X 4" Hi Capacity	4
405217	19 3/4" X 37" X 4" Hi Capacity	4
405219	19 1/2" X 36 3/4", 6 Pocket.	4
FM2336	23 1/2" X 35 5/8", 4 Pocket	4

Cleanable Aluminized

216-120	24" X 24" X 2"	1
216-121	20" X 20" X 1"	1
216-122	16" X 25" X 1"	1
216-124	20" X 25" X 1"	1
216-125	20" X 20" X 2"	1
216-126	16" X 25" X 2"	1
216-128	20" X 25" X 2"	1
216-129	12" X 12" X 1"	1



Panel Filters

AR-9027-K12	16" X 20"	12
FS-2072-K6	20" X 72" (Burner Filter)	6
PF-500-K6	20" X 25" X 10", Secondary	6
PF-879-K2	25" X 75"	2



GFS LINE OF FILTERS!

The only polyester pad or roll media currently available with MERV 10 efficiency! The average removal efficiency of these filters, as tested, is 40% at 0.5 microns and over 92% at 3 microns, offering a wide spectrum of applications where efficiency and low resistance to airflow is required.

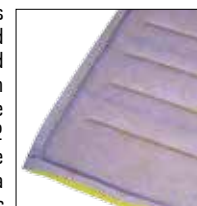
Versa10: Suitable for overspray collection of dry, powdered particulate, finely atomized coatings. Capable of removal efficiency ranges normally found in second-stage filtration, this media is compliant with current EPA requirements for removal efficiency as specified in 6H and MFHAP standards.



216-580 48" x 90', 1 roll per package

216-585 20" x 20", 30 pads per box

Xtreme: Ideally suited for HVAC applications where high efficiency is required and plenum space prohibits the use of extended surface filters. In overspray collection applications, this product is fitting for use in aerospace applications as a Stage 2 filter, protecting the final filters from premature change-outs. Xtreme is also well chosen as a Stage 2 removal filter for spray-to-waste powder coating and dust collection operations, where it provides a superior level of protection to final filters.



216-513 20" x 20", 24 pads per box

216-514 20" x 25", 24 pads per box

Additional filter sizes are available for both filters; contact GFS!

Doors

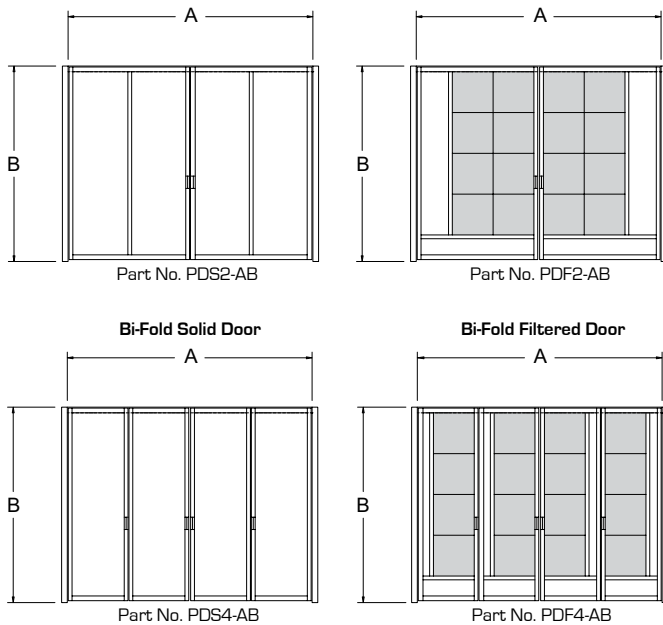
PRODUCT ENTRANCE DOORS

GFS doors are constructed of factory-painted sheet metal on an internal frame. We supply doors for both auto/truck refinish and all our industrial type spray booths. We also provide replacement doors for any of our legacy booths from JBI, Binks, DeVilbiss, Milbanks and Blu-Surf.

INDUSTRIAL DOORS



GFS' industrial product doors are constructed with tubular steel frames and structural steel door jams. Solid doors are covered with a single-skin, 18-gauge steel sheet on the inside face. Filter doors have 18-gauge filter frames for holding filters. Doors include door handles, magnetic closures, foam tape and filters (if applicable). Doors are painted gray or white.

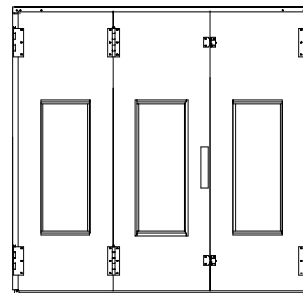


REFINISH DOORS

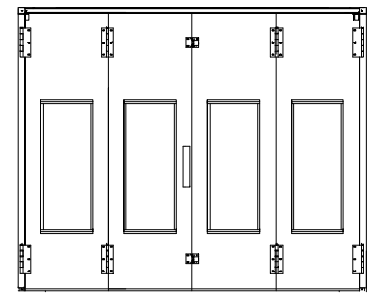


White pre-coated product doors with observation windows on all door wings. Select from three- or four-wing door options. Larger truck refinish booths may have the option for five or six wings, with or without observation windows.

3-Wing Entrance Door



4-Wing Entrance Door



Product Entrance Doors

Part No.	Description
FFC234	Frame crate 2 slab - filtered door
FFC333	3 slab solid door used with a Yoke
FFC344	3-wing frontal
FFC401	Frame crate 4-wing frontal
FRC212	Frontal crate - filtered door
FRC332	Frontal crate 3 slabs no side panels
FRC411	Frontal crate 4 slabs, with 2 18" side panels
FRC41109	4-Wing frontal 4 slabs, no side panels

Product Entrance Doors

	Face Mount	Flange Mount	Width	Height	Galvanized	Precoat White
Solid Swing	IPDS	IPDS2	A	B	G	W
Solid Bi-Fold	N/A	IPDS4				
Filtered Swing	IPDF	IPDF2				
Filtered Bi-Fold	N/A	IPDF4				

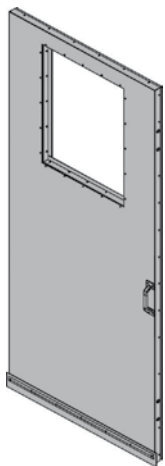
Notes:

- Indicate Width (A) and Height (B) when ordering.
- Tri-Fold/ Multi-Wing Doors are also available, please consult GFS.

Doors

INDUSTRIAL PERSONNEL DOORS

These universal doors can be located on either side of booth, and installed for either right- or left-hand swing. Observation windows and pre-coated white are optional. Installation kit included.



Part No.	Description
MDUG-36084	36" w X 84" h, galvanized
MDUG-36084-OSQ	36" w X 84" h, with observation window, galvanized
MDUW-36084	36" w X 84" h, pre-coat white
MDUW-36084-OSQ	36" w X 84" h, with observation window, pre-coat white
MDU-S-MISC	Door installation kit, required per installation

Personnel Door Kit includes tempered glass, weather stripping, window frame, window template and instructions.

Part No.	Description
WK-1824-MANDOOOR	18" X 24", galvanized
WK-1824-MANDOOOR-WH	18" X 24", pre-coat white

Observation Window Kit for panels includes tempered glass, weather stripping and window frame.

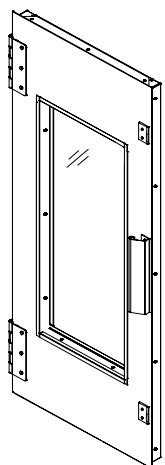
WK-1824	18" X 24"
WK-1848	18" X 48"

Tempered Glass for observation window

230-001	18" x 24"
230-195	24" x 48"

REFINISH PERSONNEL DOORS

Constructed of white pre-coated, galvanized steel, and with an internal frame of sturdy, galvanized plate profiles. The dual-skin, side-access doors include an observation window.



Part No.	Description
DP37A	Personnel access door 7'
DP38A	Personnel access door External 3' w x 7'-8" h, for booths with PLP floor profile
DP38C	Personnel access door External 3' w x 7'-8" h, for booths w/o PLP floor profile
DH101	Hardware kit for Refinish Doors
WKS-1000-I	Single skin, observation window kit 14.5" X 45.5"

HARDWARE

GFS uses only top-quality hardware. Our weld-free designs mean no weak points and no corrosion. GFS hinges, latches and hardware are all fully adjustable so you get the perfect fit, every time.

Part No.	Description	Part No.	Description
Door Hinges		Door Latches	
208-242	Strap, 16" long, Zinc Flush	208-037	BRIXON #83P Cast Steel
208-033	Steel 1.75" wide X 9" long, Butt	208-094	BRIXON #2P Cast Iron
208-411	Burn-Off Oven, 11" long	LTC235	Door Clicker (Each)
208-029	4" X 10" X .125" Steel Butt Style	STR1535	Striker Plate Long
208-030	2.5" X 10" X .125" Half Swaged	STR735	Striker Plate Short
208-119	2.5" X 4" X .125" Partly Swaged	39050	Lever Latch with Pins & Clips
DHA04110	Automotive, Assy Open	HBL-100	BRIXON Latch Kit (older)
DHA05111	Automotive, Assy Closed	Door Pulls	
		208-252	Handle 5" O/A Zinc
KHDC-2000	Automotive, Hinge Kit Center Door, Blowtherm (System 2000)	DH0215	Door Handle Metal
KHDS-2000	Automotive Door Hinge Kit Blowtherm (System 2000)	DH2555	Door Handle Fiberglass
		208-040	Door Pull, Standard Zinc
		208-406	Door Pull (Batch Process Oven)

Doors

DOOR SEALS

Part No.	Description
248-003	.50 x .25 Closed Cell Seal Tape 
248-004	.50 x .50 Closed Cell Seal Tape 
248-007	3/16" x 5/8" W, 30' Roll Tape Butyl 
248-011	.125 x 3.0 W Rubber Strip 
248-012	.125 x 4.0 W Rubber Strip 
248-013	.125 x 5.0 W Rubber Strip 
248-014	.125 x 6.0 W Rubber Strip 
248-021	.125 x 8.0 W Rubber Strip 
248-023	.125 x 10.0 W Rubber Strip 
248-082	P Seal - EPDM Seal Tape <i>JBI & GFS Industrial Booths</i> 
248-087	1/4" x 3/4" Wide Open Cell Tape Adhesive 

Part No.	Description
248-089	1/8" Thick x 5" W Silicone Rubber 
29-1480	12' L x 3" W x 1/8" Door Wiper Seal - Binks 
29-1481	8' L x 2" x 11/16" Bi-Fold Seal Binks 
29-1482	9' L x 2" x 1 1/4" "T" Seal Binks 
29-1484	30' Length - Binks "U" Seal 
KDS	Seal Kit Bi-/Tri-Fold (2) SS-00748, (3) SS-00749, (1) SS-9688, (1) SS-9874 

Part No.	Description
SS-00748	15' x 7" x 1/8" Black Rubber S.S. Booths 
SS-00749	12-1/2' x 3/4" x 1-1/2" Foam Tape - S.S. Booths Grey 
SS-00777	.5 X .5 X 25' Roll (LT FXT) Foam Tape 
SS-9688	V Seal 108" Long w/ Retainer Strip Tall side: 1 5/8" Short side: 1 3/8" (tape side) 
SS-9874	34' x 1/4" x 3/8" Black Foam Tape Single skin booths 
248-035	Tadpole Gasket, .50 Bulb, 1.0" Tail 
OVENS	

Part No. Description

SINGLE SKIN BOOTHS

Flexbuilt, Semi-Downdraft, Concept II, Concept II Cure, Concept Booths, Old SVS series, Crossdrafts, Drive Thru's

1960 - 1990's




Solid Backs	(3) SS-00748, (3) SS-00749, (1) SS-9874
Drive Thru's	(6) SS-00748, (6) SS-00749, (1) SS-9874

1990's - Present

Solid Backs	(2) SS-00748, (3) SS-00749, (1) SS-9688, (1) SS-9874 <i>(Same as KDS kit)</i>
Drive Thru's	(4) SS-00748, (6) SS-00749, (1) SS-9688, (1) SS-9874

INSULATED BOOTHS

For use on booth panels approximately 2" thick. Constructed of two sheets of metal with insulation in between.

39056	 3/4" x 3/4" Black rubber hollow strip, Frontal and access doors, Blowtherm /Concept Cure
R8550	 3/4" x 3/4" Black rubber hollow strip, Frontal and access doors. GFS Booths
DGK-2000	 3/4" x 3/4" x 25' Black foam tape. Contains 4 rolls to re foam a 3 door frontal and 1 access door. Older DeVilbiss, System 2000's, Expert Performer & Professional

Electrical Components

Start/Stop

Part No.	Description
127-221	Explosion Proof Heavy-duty, front-operated start/stop button can be mounted directly on booth. Use with motor starters.
127-219	General Purpose NEMA Type 1 start/stop with N.O.-N.C. contacts. Must be mounted in non-hazardous locations. Use with motor starters.
650-003	Pneumatic This system activates a pneumatic-electric interface start/stop switch that turns the exhaust fan on/off. A non-sparking, pneumatic switch is located inside the spray booth, allowing the operator to enter and leave the booth with the exhaust fan turned off. This prevents dirty, unfiltered air from entering the paint area.

Light Switches

650-001	Explosion Proof Front-operated on/off switch used in hazardous locations. One pole will handle 1400W- AC. Use with lights.
650-002	General Purpose On/off switch used in non-hazardous locations. Will handle 1400W- AC. Use with lights.

Limit Switches

Electronically operated light switches shut down the painting operations when booth doors are opened. Time delay relay allows access to the booth without stopping operations. Interior shutdown switch stops painting operations from inside.

242-012	242-014
CL 1, Div. 1 Explosion Proof Switch	CL 1, Div. 2 Standard Switch

Air Proving Switch

242-004	Automatic pressure switch measures air pressure at the exhaust chamber. Recommended for use with Safety Air Valve.
---------	---

3-Way Safety Air Valve

Part No.	Description
242-124	3/4" Ports 3-port, 2-position air valve prevents spraying with air-assist systems when booth exhaust is off. Compressed air between valve and spray equipment is vented out when exhaust is shut off. 120 Volt coil.
242-019	1/2" Ports 3-port, 2-position air valve prevents spraying with air-assist systems when booth exhaust is off. Compressed air between valve and spray equipment is vented out when exhaust is shut off. 120 Volt coil.
242-028	For LOGIC controls - Automotive
36267	Economy Spray Gun interlock - Automotive

Safety Shut-Down

System automatically turns off compressed air to the spray gun when paint accumulation in the exhaust filters reaches a pre-set load point that prevents proper airflow through the booth. Complies with fire, health and insurance code requirements.

600-003	Standard System
600-004	Standard System w/ Audible Alarm
600-005	Explosion Proof System
600-035	Gun Hanger Automatically starts up ventilation when the spray gun is lifted from the hanger, and shuts down the exhaust system when the spray gun is returned to the hanger. Explosion proof. Class 1, Division 1.

Booth Gauges

242-001	Manometer/Draft Gauge Indicates when paint arrestors or air intake filters have become sufficiently loaded and need replacement. Meets code compliance. Included with all exhaust chambers and booths.
GA-9706	Magnahelec Gauge - Automotive Indicates when the booth cabin is balanced and ready for spraying. Gauge must be calibrated prior to use.

Lighting

GFS MANUFACTURED LIGHTING



GFS - Inside Access Lighting

Part No.	Tube	Length	Lamp Size/Volt/Watt
LABW12-4	4	4'	T8 / 120-277V / 32W
LABW12-6	6	4'	T8 / 120-277V / 32W
LAR12-4	4	4'	T8 / 120-277V / 32W For Dual Skin Panels
LAR12-6	6	4'	T8 / 120-277V / 32W For Dual Skin Panels
LAB12-3-36	3	3'	T8 / 120V / 32W For AdvanceCure Units
LABW12-4-LAM	4	4'	T8 / 120-277V / 32W Blast Booths ONLY
LABW12-6-LAM	6	4'	T8 / 120-277V / 32W Blast Booths ONLY

GFS - T5 Light Fixtures

LABW-4T5-D12	4	4'	T5 / 120-277V / 54W
LABW-6T5-D12	6	4'	T5 / 120-277V / 54W

- High output, energy efficient
- Recommended for booths with high ceilings and areas working with high temperatures.



GFS - Corner Lighting

Part No.	Tube	Length	Lamp Size/Volt/Watt
LAC12-4	4	4'	T8 / 120-277V / 32W
LAC12-6	6	4'	T8 / 120-277V / 32W

GFS - Class II, Division 2 Lighting

Part No.	Tube	Length	Lamp Size/Volt/Watt
LAB12-4-C2D2	4	4'	T8 / 120-277V / 32W
LAB12-6-C2D2	6	4'	T8 / 120-277V / 32W



Light fixtures designed for locations where accumulation of dust may interfere with heat dissipation from electrical equipment or where accumulations near electrical equipment may be ignited.

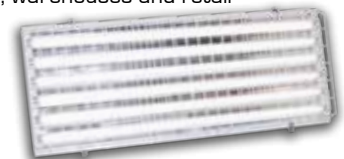


GFS - High Bay/General Purpose Lighting

Part No.	Tube	Length	Lamp Size/Volt/Watt
LFG-1749-6	6	4'	T8 / 120-277V / 32W
LFG-1749-6-T5	6	4'	T5 / 120-277V / 54W

Ideal light fixture for gymnasiums, warehouses and retail

- High output, energy efficient
- Environmentally responsible when using low mercury tube
- Choose from Standard or Deep-Well Reflector
- Programmed electronic ballast are available



General Purpose Accessories

Part No.	Description	Additional lengths are available
LFGA-PC120-10-KIT	120V, 10' power cable	Additional lengths are available
LFGA-PC277-10-KIT	277V, 10' power cable	
LFGA-SC-10	10' suspension cable	
LFGA-VH	V-Hanger bracket	
LFGA-WG1648	16.5" x 48" wire guard	
LFGR-003	Standard Reflector - "Wide" light distribution	
LFGR-007	Deep Well Reflector - "Narrow" light distribution	

Lighting

FLUORESCENT LIGHTING

Inside Access Lighting

Part No.	Tube	Length	Lamp Size/Volt/Watt
230-306	2	4'	T8 / 120V / 32W
230-501	4	4'	T8 / 120-277V / 32W
230-400	2	3'	T8 / 120V / 25W
230-405	4	3'	T8 / 120V / 25W

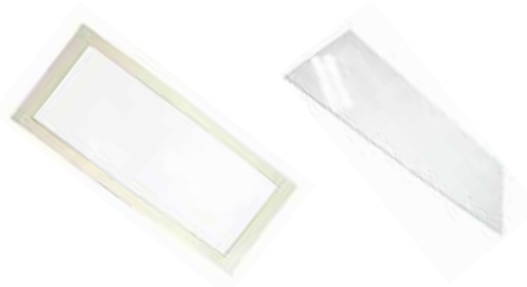
Rear Access Lighting

Part No.	Tube	Length	Lamp Size/Volt/Watt
230-551	4	4'	120V/32W

REPLACEMENT GLASS

Glass/Frame Cover

Part No.	Replacement for
GF-4	Standard 4-tube light fixtures
GF-6	Standard 6-tube light fixtures
GL-9704	Tempered glass for standard fixtures



REPLACEMENT TUBES/BULBS

Fluorescent Tubes

Part No.	Length	Replacement for:
230-281	4'	T8 fixtures, 32W
230-285	4'	T5 fixtures, 54W
230-271	3'	LAB12 fixtures, 32W
230-281	4'	General purpose fixture



Incandescent Bulbs

230-147	600-001, 600-002, 600-006
---------	---------------------------



EXPLOSION PROOF LIGHTING

Explosion-proof lighting is recommended for hazardous locations, such as spray booths, marines/shipyards, chemical manufacturers, oil drilling rigs and gas processing plants.

- Factory sealed, cased aluminum with white finish reflector.
- UL listed:
 - For use in paint spray booths and rooms
 - UL 844 for hazardous locations
 - UL 595 for outdoor, marine-type lighting (salt water)
- Class I, Division 1, Groups C & D; Class I, Division 2, Groups A, B, C & D; Class II, Division 2, Groups E, F & G.
- Meets requirements for NFPA 33 and NEC Article 516.



Explosion Proof Lighting

Part No.	Tube	Length	Lamp Size/Watt
230-163	4	4'	T-8 / 120-277V/60W
230-166	2	4'	T-8 / 120-277V/60W

3 tube fixtures also available, call GFS for details

INCANDESCENT LIGHTING

- Meets state and local safety specifications for Class I, Division 1, Hazardous location.
- Angle fixtures can be supported for mounting at face of booth with fixture bracket Part # 414-004
- Recommended for use in paint supply mixing and storage areas.



Incandescent Lighting

Part No.	Style	Lamp Size/Watt
600-001	Ceiling Mount w/ Dome	150/300W
600-002	Wall Mount w/ Dome	150/300W
600-006	Ceiling Mount w/ Angle	150/300W



Motors

All AC, polyphase induction motors are mounted on standard NEMA frame bases, and are available in totally enclosed, fan-cooled and explosion-proof types. All motors feature ball-bearing construction, heavy-duty, corrosion-resistant housings, and bearing brackets.

Rotors and shafts are dynamically balanced to assure smooth, vibration-free operation. Inner races are locked to shaft outer races to end bracket, reducing endplay and maintaining alignment for V-belt drives. Windings are designed for long dependable life under adverse operating conditions. Integral rotor fans in enclosed types direct cooling air over windings, reducing noise and prolonging motor life. Conduit boxes have ample hand room for easy accessibility and quick connection of leads.

All motors conform to state and local fire and safety regulations, and may be mounted in either a vertical or a horizontal position. Motors are rated for exhaust fan units (at 1750 RPM). Various RPM motors are also available. Motors as listed comply with the new EPACT Regulation for Maximum High Performance and Efficiency.



TOTALLY ENCLOSED, FAN COOLED (TEFC Motor)

GFS guarantees quality performance by providing the best components. For that reason, Totally Enclosed, Fan-Cooled Motors are standard in all our products. TEFC motors are superior to open-drip type motors, and are UL approved.



EXPLOSION-PROOF

Designed for hazardous locations. UL approved for Class I, Group D; Class 2, Groups F & G. UL-approved conduit box standard. Feature corrosion-resistant epoxy finish.

Standard Electric Motors				
HP	Single Phase	Volt	Three Phase	Volt
1/3	MT003-DV1-0056	Dual	MT003-573-0056	575
			MT003-TV3-0056	Tri
1/2	MT005-DV1-0056	Dual	MT005-573-0056	575
			MT005-TV3-0056	Tri
3/4	MT007-DV1-0056	Dual	MT007-573-0056	575
			MT007-TV3-0056	Tri
1	MT010-DV1-0056	Dual	MT010-573-0056	575
			MT010-TV3-0056	Tri
			MT010-TV3-143T	Tri
2	MT020-DV1-145T	Dual	MT020-TV3-145T	Tri
			MT020-573-145T	575
3	MT030-DV1-184T	Dual	MT030-573-182T	575
			MT030-TV3-182T	Tri
5	MT050-231-184T	230	MT050-573-184T	575
			MT050-TV3-184T	Tri
			MT075-203-213T	200
7 1/2	MT075-231-215T	230	MT075-573-213T	575
			MT075-TV3-213T	Tri
10	-	-	MT100-203-215T	200
			MT100-573-215T	575
			MT100-TV3-215T	Tri

Explosion Proof Motors				
HP	Single Phase	Volt	Three Phase	Volt
1/3	MX003-TV1-0056	Tri	MX003-TV3-0056	Tri
			MX003-573-0056	575
1/2	MX005-DV1-0056	Dual	MX005-573-0056	575
			MX005-TV3-0056	Tri
3/4	MX007-DV1-0056	Dual	MX007-573-0056	575
			MX007-TV3-0056	Tri
1	MX010-DV1-0056	Dual	MX010-573-0056	575
			MX010-TV3-0056	Tri
2	MX020-DV1-182T	Dual	MX020-573-145T	575
			MX020-TV3-145T	Tri
3	-	-	MX030-573-182T	575
			MX030-TV3-182T	Tri
5	-	-	MX050-573-184T	575
			MX050-DV3-184T	Dual
7 1/2	-	-	MX075-573-213T	575
			MX075-TV3-213T	Tri
10	-	-	MX100-573-215T	575
			MX100-DV3-215T	Dual

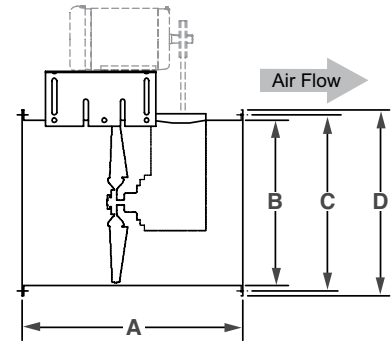
Fans

TUBE AXIAL EXHAUST FANS - GFA MODELS

GFS' tube axial fans feature a continuously welded housing for an airtight seal. The propellers are made of non-sparking cast aluminum for consistent air velocity at higher static pressures. The universal motor plates allow adjustable belt tensioning. The bearings are self-aligning, of premium air handling quality, and with an L10 life of 40,000 hours. The belt guard provides protection from the rotating pulley (OSHA requirement). Fans have been designed per AMCA 210 standards.



Model	A Ring to Ring	B Inside Dim.	C Mounting Bolt	D Outside Dim.
GFA-18	24"	18"	19 1/4"	20 1/2"
GFA-24	24"	24"	25 1/2"	26 7/8"
GFA-30	30"	30"	31 3/4"	33"
GFA-34	30"	34"	35 3/4"	37"
GFA-40	30"	40"	41 3/4"	43"



Note: Sound level data given in the fan chart was obtained under laboratory conditions. It is not likely that these results will permit determination of sound power in all site conditions. Data published in this chart may be used for the following purposes:

- Comparison of fans that are similar in type and size.
- Scaling down fan noise from one size and speed to another size and speed.

Depending on the application, configuration of the apr duct, attention characteristics of material used, and acoustical condition, etc., the reduction in dB will vary.

Model No. (Less Motor)	HP	RPM	Free Air	0.25"	0.375"	0.5"	0.75"	1.0"	1.25"	dBa
18" Tube Axial Fan										
GFA-18VP-003	1/3	1228-1332	2610-2831	1304-1608	-	-	-	-	-	72 - 74
GFA-18VP-005	1/2	1437-1541	3054-3275	1940-2282	1430-1703	-	-	-	-	76 - 78
GFA-18VP-007	3/4	1437-1854	3054-3941	1940-3326	1430-2686	*1618-2187	-	-	-	76 - 82
GFA-18VP-010	1	1593-2116	3386-4498	2461-4081	1857-3570	*1748-3021	*1700-2231	-	-	78 - 85
GFA-18VP-020	2	2116-2638	4498-5607	4081-5273	3570-5106	3021-4754	2231-3851	*2833-3140	-	85 - 90
24" Tube Axial Fan										
GFA-24VP-010	1	1437-1541	5691-6102	5142-5610	4796-5288	4353-4966	*3866	-	-	82 - 84
GFA-24VP-020	2	1593-2011	6308-7964	5842-7669	5531-7422	5334-7175	4225-6681	*4621-6019	*4294-5141	85 - 90
GFA-24VP-030	3	1802-2220	7136-8791	6763-8550	6487-8340	6212-8116	5601-7669	4621-7221	*4294-6545	88 - 93
30" Tube Axial Fan										
GFA-30VP-020	2	610-835	7618-10582	5571-9363	4150-8596	*5427-7579	-	-	-	77 - 84
GFA-30VP-030	3	700-926	8804-11760	7217-10828	5979-10078	*5427-9377	*6959	-	-	80 - 86
GFA-30VP-050	5	971-1197	12379-15357	11469-14617	10810-14211	10131-13725	8322-12615	*7898-11349	*8345-9377	87 - 92
34" Tube Axial Fan										
GFA-34VP-020	2	915-1108	11978-14504	10164-13265	8740-12232	*9851-11063	-	-	-	84 - 87
GFA-34VP-030	3	979-1236	12816-16180	11248-15069	9943-14392	*9851-13373	*11076	-	-	86 - 92
GFA-34VP-050	5	1108-1429	14504-18706	13265-17746	12232-17265	11063-16649	*11076-14878	*12835	-	89 - 95
40" Tube Axial Fan										
GFA-40VP-050	5	915-1140	21163-26367	18374-24197	16364-23032	13626-21693	*15746-17392	-	-	87 - 93
GFA-40VP-075	7 1/2	937-1242	21672-28726	18974-26734	17189-25738	14424-24553	*1665-21157	-	-	88 - 95

Premium efficient replacement motors, may vary in physical size from Standard efficient motors.

dBa is only an estimate of sound pressure at 5'.

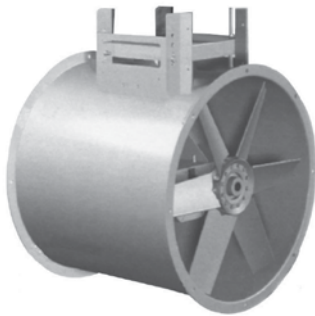
* - This represents the lowest possible CFM at a particular static pressure due to instability of the fan curve.

The drive sheave cannot be set below a certain RPM for the ratings.

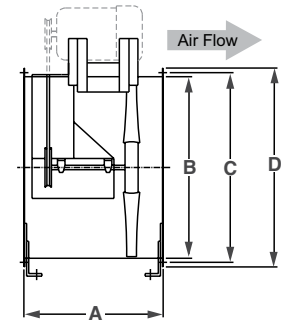
Fans

TUBE AXIAL EXHAUST FANS - TAB MODELS

The ideal choice for installations with straight-through airflow in ducted or non-ducted systems. These tube axial fans are designed for commercial and industrial applications where low to medium air volumes are required at lower pressures. Units are pre-assembled at the factory, and include variable-pitch motor sheaves for maximum operating efficiency and on-site adjustment.



Model	A Ring to Ring	B Inside Dim.	C Mounting Bolt	D Outside Dim.
TAB-12	18"	12.25	14.00	14.88
TAB-18	22"	18.38	19.75	21.63
TAB-24	23"	24.38	25.75	27.63
TAB-30	24"	30.38	32.00	33.63
TAB-36	29"	36.38	38.00	39.63
TAB-42	30"	42.50	44.25	45.75
TAB-48	33"	48.50	50.75	52.75



Performance shown is for installation type B: free inlet, ducted outlet. Power rating [Bhp] does not include drive losses. Performance ratings do not include the effects of appurtenances in the airstream. The AMCA Certified Ratings Seal applies to air performance ratings only.

* Sound power values listed are at 0.250 inches pressure wg for each rpm.
 ** dBA sound pressure values are weighted with 11.5 dB attenuation for each octave band at 5 feet. Listed sound pressure value is for each rpm at 0.250 inches wg.

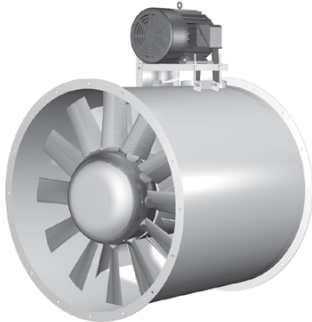
Model No. (Less Motor)	HP	RPM	Free Air	0.25"	0.375"	0.5"	0.75"	1.0"	1.25"	dBA
12" Tube Axial Fan										
TAB-12-03	1/3	2400	1400	1200	1100	-	-	-	-	82
18" Tube Axial Fan										
TAB-18H-3	1/3	880 - 1290	2196 - 3219	*1796 - 2659	*1858 - 2242	-	-	-	-	70 - 72
TAB-18H-5	1/2	1025 - 1502	2558 - 3743	1706 - 3299	*1905 - 2999	*2209 - 2629	-	-	-	70 - 75
TAB-18H-7	3/4	1263 - 1740	3145 - 4342	2563 - 3976	2110 - 3749	*2209 - 3489	*2555 - 2794	-	-	71 - 79
TAB-18H-10	1	1454 - 1931	3631 - 4817	3165 - 4493	2851 - 4313	2437 - 4089	*2555 - 3575	-	-	74 - 81
TAB-18H-20	2	1652 - 2193	4118 - 5465	3728 - 5189	3475 - 5031	3192 - 4869	*2632 - 4464	*3068 - 3982	-	78 - 86
TAB-18H-21	2	1847 - 2281	4604 - 5690	4263 - 5424	4064 - 5276	3827 - 5124	3251 - 4750	*3068 - 4320	-	78 - 86
24" Tube Axial Fan										
TAB-24-5	1/2	713 - 1044	3977 - 5828	*2816 - 4720	*3326 - 3972	-	-	-	-	69 - 74
TAB-24-7	3/4	841 - 1232	4685 - 6859	3116 - 5984	*3479 - 5424	*4078 - 4779	-	-	-	70 - 76
TAB-24-10	1	924 - 1353	5159 - 7529	3825 - 6772	3630 - 6271	*3927 - 5731	-	-	-	72 - 79
TAB-24-20	2	1154 - 1533	6441 - 8533	5481 - 7882	4855 - 7485	4078 - 7041	*4633 - 6046	-	-	76 - 82
TAB-24-21	2	1325 - 1687	7389 - 9397	6609 - 8817	6097 - 8497	5539 - 8099	*4797 - 7260	*5581 - 6282	-	78 - 85
TAB-24-30	3	1454 - 1964	8114 - 10958	7425 - 10473	6985 - 10205	6514 - 9931	5399 - 9252	*5480 - 8530	*6704	80 - 89
30" Tube Axial Fan										
TAB-30-7	3/4	639 - 937	6373 - 9311	*3941 - 7503	*4627 - 6347	-	-	-	-	65 - 75
TAB-30-10	1	713 - 1044	7120 - 10406	4317 - 8812	*4490 - 7935	*5164 - 6717	-	-	-	67 - 77
TAB-30-20	2	814 - 1192	8116 - 11850	5936 - 10465	*4627 - 9738	*4888 - 8928	*6211	-	-	74 - 81
TAB-30-21	2	985 - 1308	9809 - 13045	8111 - 11805	7080 - 11141	5439 - 10460	*5934 - 8761	-	-	76 - 83
TAB-30-30	3	1179 - 1502	11751 - 14938	10352 - 13887	9616 - 13294	8786 - 12718	5934 - 11506	*7197 - 9893	-	79 - 87
TAB-30-50	5	1425 - 1760	14191 - 17527	13071 - 16648	12452 - 16169	11847 - 15664	10473 - 14682	8542 - 13639	*8147 - 10731	86 - 94
36" Tube Axial Fan										
TAB-36-10	1	587 - 860	9116 - 13356	*5175 - 10659	*5941 - 8728	-	-	-	-	67 - 77
TAB-36-20	2	670 - 981	10405 - 15219	6208 - 12922	*6727 - 11587	*6578 - 9717	-	-	-	73 - 81
TAB-36-21	2	807 - 1072	12502 - 16617	9563 - 14531	7072 - 13383	*7664 - 11983	-	-	-	75 - 83
TAB-36-30	3	966 - 1231	14986 - 19102	12650 - 17309	11250 - 16363	9297 - 15345	*8631 - 12723	-	-	79 - 86
TAB-36-50	5	1197 - 1478	18558 - 22907	16709 - 21440	15731 - 20660	14656 - 19872	11754 - 18175	*10350 - 16062	-	84 - 90
TAB-36-75	7 1/2	1394 - 1676	21664 - 26013	20103 - 24731	19279 - 24058	18439 - 23371	16578 - 21976	13994 - 20429	12582 - 16203	89 - 94
42" Tube Axial Fan										
TAB-42-20	2	576 - 781	13489 - 18290	7837 - 15263	*10312 - 13020	-	-	-	-	68 - 72
TAB-42-21	2	620 - 841	14519 - 19695	9920 - 16922	*9774 - 15184	*11301 - 12374	-	-	-	73 - 75
TAB-42-30	3	785 - 989	18383 - 23161	15375 - 20849	13179 - 19597	*11645 - 18100	-	-	-	77 - 79
TAB-42-50	5	820 - 1112	19203 - 26041	16345 - 23964	14513 - 22946	11350 - 21795	*14864 - 18712	-	-	80 - 84
TAB-42-75	7 1/2	1060 - 1299	24823 - 30420	22654 - 28611	21542 - 27765	20309 - 26897	16591 - 24896	*15872 - 22199	*18068	85 - 87
TAB-42-100	10	1206 - 1444	28242 - 33816	26311 - 32174	25400 - 31403	24386 - 30642	22001 - 28963	18301 - 27018	*18166 - 24490	88 - 90
48" Tube Axial Fan										
TAB-48-21	2	514 - 673	18620 - 24379	10248 - 19607	*13940 - 16370	-	-	-	-	70 - 73
TAB-48-30	3	611 - 771	22133 - 27929	16657 - 23842	*14094 - 21494	*16007 - 18445	-	-	-	74 - 77
TAB-48-50	5	717 - 904	25973 - 32747	21590 - 29237	18785 - 27527	*15697 - 25476	*19520	-	-	79 - 82
TAB-48-75	7 1/2	855 - 1043	30972 - 37783	27270 - 34800	25439 - 33231	23096 - 31751	*18206 - 28073	*22474	-	83 - 86
TAB-48-100	10	951 - 1138	34450 - 41224	31134 - 38532	29478 - 37055	27692 - 35676	23094 - 32662	*22552 - 28947	-	87 - 89

* - This represents the lowest possible CFM at a particular static pressure due to instability of the fan curve. The drive sheave cannot be set below a certain RPM for the ratings.

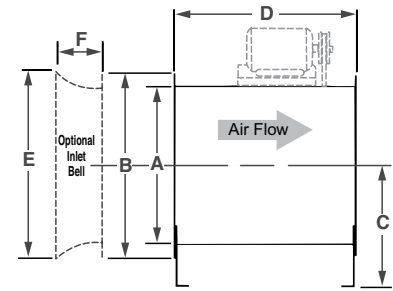
Fans

HIGH PERFORMANCE VANE AXIAL FANS

Designed for moving air through systems with resistance up to 4" water gauge loss. Vane axial fans are typically characterized by a propeller with a large hub and short, wide, airfoil blades. In addition, a set of guide vanes is installed in the fan housing to straighten out the rotation of the air stream created by the propeller. This combination of propeller design and guide vanes allows the fan to produce higher pressures and greater efficiencies. At lower static pressures, the vane axial fan will move large air volumes at lower speeds.



A	B	C	D	E	F	G
18"	18 3/8"	21 3/4"	13 1/2"	32"	23 1/2"	4 1/2"
20"	20 3/8"	23 3/4"	15"	32"	26"	4 3/4"
24"	24 3/8"	27 3/4"	17 1/2"	36"	21"	5 3/4"
30"	30 3/8"	33 3/4"	21 1/4"	40"	38 1/2"	7"
36"	36 3/8"	39 3/4"	25"	40"	46"	8 1/2"
42"	42 1/2"	47"	29"	44"	54"	10"
48"	48 1/2"	53"	34"	48"	62"	11 1/2"



STATIC PRESSURE IN INCHES W.G.

SCFM	Outside Velocity	STATIC PRESSURE IN INCHES W.G.									
		1		1.5		2		3		4	
		RPM	BHP	RPM	BHP	RPM	BHP	RPM	BHP	RPM	BHP
18" Vane Axial Fan											
4000	2174	2171	2.19	2270	2.55	2369	2.94	2562	3.78	2758	4.72
24" Vane Axial Fan											
8000	2469	1941	4.23	-	-	2063	5.56	2190	7.06	2322	8.71
10000	3086	1765	3.66	1855	4.51	1952	5.45	2139	7.52	2323	9.82
30" Vane Axial Fan											
12000	2386	1510	5.45	1564	6.41	1618	7.42	1737	9.72	1863	12.4
14000	2783	1418	5.4	1494	6.69	1569	8.08	1720	11.2	1868	14.7
16000	3181	1458	7.6	1552	7.76	1642	9.48	1813	13.2	1973	17.4
36" Vane Axial Fan											
16000	2216	1210	5.51	-	-	1309	10.4	1410	13.5	1511	17
18000	2493	1146	6.14	1233	7.36	1318	9.37	1486	13.9	1653	19
18000	2493	1181	6.44	1246	7.75	1312	9.51	1444	13.4	1575	17.8
20000	2770	1188	8.2	1285	8.54	1378	10.8	1555	15.7	-	-
42" Vane Axial Fan											
22500	2284	1105	7.29	1156	10.1	1210	12.2	1321	17.1	1432	22.5
24000	2437	996	9.15	1064	9.53	1133	12	1267	17.6	1397	23.7
28000	2843	1096	9.83	1173	11.9	1249	14.9	1397	21.7	-	-
48" Vane Axial Fan											
30000	2338	857	12.1	906	12.5	958	15.4	1062	21.8	1165	29
35000	2728	897	13.7	935	14.2	1005	18.7	1113	26.3	1220	34.8
40000	3118	932	-	997	17.7	1062	22	1189	31.6	-	-



MIXED FLOW IN-LINE FANS

Mixed flow in line fans can be used with clean air for supply, exhaust or return air installations. Designed to excel in commercial applications where low sound is critical. In addition, these models are more efficient than comparably sized tubular centrifugal and vane axial fans, thus reducing the required motor horsepower and lowering operating costs.

Consult GFS for specific performance data.

Ductwork

AUTOMATIC ROOF VENTILATORS

Design provides automatic protection against rain, snow and backdraft for the exhaust system, spray booth and operator. All sizes are constructed from galvanized steel.



Part No.	Diameter
DU-ARV-12-	12"
DU-ARV-18-	18"
DU-ARV-24-	24"
DU-ARV-30-	30"
DU-ARV-34-	34"
DU-ARV-36-	36"
DU-ARV-40-	40"
DU-ARV-42-	42"
DU-ARV-48-	48"

AUTOMATIC WALL SHUTTER

For exhausting through the side of a building. Automatic wall shutters are comprised of non-motorized, gravity louvers built into a square housing, with square to round transition. Adapter flange included.



Part No.	Diameter
DU-SHW-12-12	12" x 12" w/AF
DU-SHW-18-18	18" x 18" w/AF
DU-SHW-24-24	24" x 24" w/AF
DU-SHW-30-30	30" x 30" w/AF
DU-SHW-36-34	36" x 36" w/AF 34 Duct
DU-SHW-36-36	36" x 36" w/AF 36 Duct
DU-SHW-42-40	42" x 42" w/AF 40 Duct
DU-SHW-42-42	42" x 42" w/AF
DU-SHW-48-48	48" x 48" w/AF



BAFFLES

Recommended for rear exhaust applications.

Part No.	Diameter
EB1	12" to 24"
EB2	30" to 42"

CONNECTOR RINGS

Used for connecting the exhaust fan to other exhaust stack components. Connector ring price is not included in duct pricing, unless indicated. Indicate the number of rings, and if rings are to be welded to duct or shipped loose. One connector ring is supplied with fan assemblies, as standard.



Part No.	Diameter
409-112	12"
409-118	18"
409-124	24"
409-130	30"
409-134	34"
409-136	36"
409-140	40"
409-142	42"
409-148	48"

ELBOWS

Full radius throat and pipe diameter construction allows for a smooth interior surface. Minimized airflow resistance, turbulence and exhaust air noise management is superior versus others, and can be utilized in most applications. All sizes are constructed from galvanized steel.



Part No.	Part No.	Diameter
45°	90°	
DU-E45M-12-	DU-E90M-12-	12"
DU-E45M-18-	DU-E90M-18-	18"
DU-E45M-24-	DU-E90M-24-	24"
DU-E45M-30-	DU-E90M-30-	30"
DU-E45M-34-	DU-E90M-34-	34"
DU-E45M-36-	DU-E90M-36-	36"
DU-E45M-40-	DU-E90M-40-	40"
DU-E45M-42-	DU-E90M-42-	42"
DU-E45M-48-	DU-E90M-48-	48"

EXHAUST STACK KITS

Exhaust Stack Kits include: [3] 3-ft Plain Exhaust Duct sections, [1] 3-ft Universal Stack with Access Door, and [1] Roof Ventilator.



Part No.	Diameter
DU-STK-12	12"
DU-STK-18	18"
DU-STK-24	24"
DU-STK-30	30"
DU-STK-34	34"
DU-STK-36	36"
DU-STK-40	40"
DU-STK-42	42"

FAN STAND/SUPPORT FRAMES

Outdoor roof-mounted unit specifically designed to support the exhaust fan and connected exhaust stack. GFS recommends using one for all outdoor roof-mounted exhaust fans. For flat or pitched roofs. Constructed from angle iron. Requires some assembly.



Part No.	Diameter
FSU-12	12"
FSU-18	18"
FSU-24	24"
FSU-30	30"
FSU-34	34"
FSU-36	36"
FSU-40	40"
FSU-42	42"
FSU-48	48"

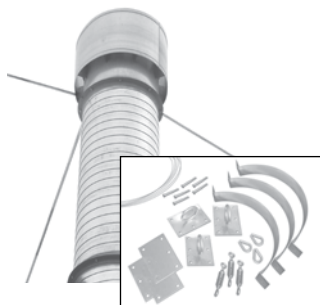
Custom Ductwork also available, Contact GFS

Ductwork

GUY WIRE KITS

Includes 50 feet of 1/8" cable, anchors, turnbuckles and clamps for installation of three guy wires to above roof exhaust stack.

Note: Connector ring sold separately.



Part No.	Diameter
DU-GWK-12	12"
DU-GWK-18	18"
DU-GWK-24	24"
DU-GWK-30	30"
DU-GWK-34	34"
DU-GWK-36	36"
DU-GWK-40	40"
DU-GWK-42	42"
DU-GWK-48	48"

ROOF FLANGES

Not recommended for corrugated metal roofs. GFS recommends a custom curb on a roof pitch that exceeds 4" on 12; specify pitch when ordering.

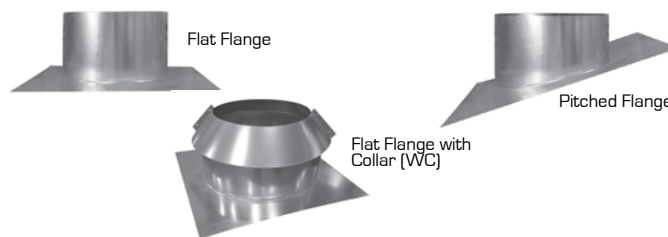
Part No.	Part No.	Diameter
Flat	Pitched	
DU-FRF-12-WC	DU-PRF-12-___-WC	12"
DU-FRF-18-WC	DU-PRF-18-___-WC	18"
DU-FRF-24-WC	DU-PRF-24-___-WC	24"
DU-FRF-30-WC	DU-PRF-30-___-WC	30"
DU-FRF-34-WC	DU-PRF-34-___-WC	34"
DU-FRF-36-WC	DU-PRF-36-___-WC	36"
DU-FRF-40-WC	DU-PRF-40-___-WC	40"
DU-FRF-42-WC	DU-PRF-42-___-WC	42"
DU-FRF-48-WC	DU-PRF-48-___-WC	48"

MOTOR COVERS

Weather-tight, ventilated enclosure designed to protect the electric fan motor when installed outside. Constructed from galvanized steel. Requires some assembly.



Part No.	Diameter
FMC-12	12"
FMC-18	18"
FMC-24	24"
FMC-30	30"
FMC-34	34"
FMC-36	36"
FMC-40	40"
FMC-42	42"
FMC-48	48"



SOUND MANAGEMENT

These units are to be installed between the exhaust system origination point and the exhaust fan. Each installed muffler can reduce the noise level from 2 to 5 dB in most situations. All sizes are manufactured from galvanized steel and acoustical sound attenuation materials, and include one fan connector ring.



Part No.	Diameter
MUF-18365	18"
MUF-24361	24"
MUF-34362	34"
MUF-40363	40"

PLAIN EXHAUST DUCT

Straight, 3-foot long section, with one end corrugated for easy installation. Duct can be ordered with a removable Access Door (CO) used for inspection and cleaning. All sizes are constructed from galvanized steel. Requires some assembly.



Part No.	Diameter
DU-PLP-12-3-	12"
DU-PLP-18-3-	18"
DU-PLP-24-3-	24"
DU-PLP-30-3-	30"
DU-PLP-34-3-	34"
DU-PLP-36-3-	36"
DU-PLP-40-3-	40"
DU-PLP-42-3-	42"
DU-PLP-48-3-	48"

STANDARD SPIRAL DUCT

Available in 4- or 8-foot lengths. All sizes are constructed from galvanized steel. Will require connector rings on each end.



Part No.	Diameter
DU-SPP-12-	12"
DU-SPP-18-	18"
DU-SPP-24-	24"
DU-SPP-30-	30"
DU-SPP-34-	34"
DU-SPP-36-	36"
DU-SPP-40-	40"
DU-SPP-42-	42"
DU-SPP-48-	48"

Controls

CONTROL PANELS UL 508 & CUL Listed Panels

Control Panel Features & Options																															
S = Standard Feature ◆ = Optional Feature		Type 1 enclosure	Type 12 enclosure	Type 4 enclosure	Type 7 enclosure	Main disconnect	Main breaker disconnect	Magnetic motor starter	Exhaust Variable Frequency Drive	Motor fuse protection	Lighting contactor	Lighting fuse protection	System operating controls	Terminal strip for field wiring	System operation lights	Air replacement temp. selector	Paint/Cure switch	System start-up interlock timer	Purge timer	Hour meter	Digital temp readout	Air balance control system	Dirty filter interlock	Air solenoid contact (Interlock) (Air Solenoid not included)	Door limit switch interlock	Air proving interlock	Infrared heat controls	UL industrial listing	Panel view touch screen	Programmable Logic Controller (PLC)	Gun hanger switch
Standard Control Panel	S					S		S		S	S	S	S	S	S								◆	S	◆	◆		S			
Standard Control Panel with Power Saver		S		◆		S			S	S	S	S	S	S	S				S	◆			◆	S	◆	◆		S			S
Deluxe Control Panel (Pressurized Booth)		S	◆	◆		S	S	◆	S	S	S	S	S	S	S	S	◆	S	◆	◆	◆	◆	◆	S	S	◆	◆	S	◆	◆	
Deluxe Control Panel w/Economizer feature		S	◆	◆		S		S	S	S	S	S	S	S	S	S	S	S	S	◆	◆	S	◆	S	S	◆	◆	S	◆	S	S

STANDARD PANEL



Prewired, standard control panel features single-point connection for quick and easy wiring with NEMA rate enclosure.

DELUXE PANELS



Are for special applications such as booths with air makeup units, multiple booth operations or booths with automatic air balancing systems. Each control panel is designed for a single point wiring connection.

All control wires are numbered for easy wire identification. All components are labeled to match electrical schematic. Includes terminal strip for field wiring.

INSIGHT

A PLC-based, UL-listed control system with an intuitive, simplistic touch screen, the INSIGHT control panel allows you to continually monitor all systems for safety and function. Pop-up displays indicate running information and faults, while the Professor help function guides the operator through fixing faults



AXIOM

The AXIOM control panel is a simplified, easy-to-use control system. The intuitive display provides continuous updates of the system control of operation and faults.

Features:

- 4" touch-pad interface
- Spray, cure and flash cycles
- Auto pressure control
- Lighting controls
- 18 system faults/warning codes
- Controls for Economy Mode, optional



LOGIC 3

Designed with everything you need to control your booth, the LOGIC 3 control panel comes standard with controls for optional AdvanceCure, Smart Flash and SmartCure. Along with the purchase of an intake VFD, it can be upgraded to include filter monitoring and Economy Mode.

With a clear 6" monochrome interface, the LOGIC 3 is an impressive yet simple control system for your booth.



LOGIC 4

The fully loaded LOGIC 4 control panel provides complete control over your booth, and the ability to easily switch from a waterborne user interface to a solvent base interface. At the touch of a button, you have controls for AdvanceCure, SmartCure and Smart Flash. The panel even comes with Economy Mode and filter monitoring functions, saving you time and money.

The LOGIC 4 boasts a 10" color user interface, displaying more information on each screen so that users can operate the booth quickly and more efficiently.



Contact GFS to create a custom panel or help you find the control panel that will suit your needs.

AIR BALANCING - ENERGY SAVING PACKAGES

The following air-balancing packages can be purchased with new booths or for existing booths already in service. They can be purchased alone or in tandem, for additional energy savings.

VARIABLE FREQUENCY DRIVES (VFDS)

VFDS automatically adjust fan motor speeds based on actual airflow conditions, and maintain an air balance within the paint booth, preventing paint fumes from escaping and dust from entering. They also provide optimum air pressure, consistent exhaust and a consistency in controlled temperature.

Benefits:

- Decreases energy cost
- Improves process control
- Increases transfer efficiency
- Extends dry filter usage up to 50%
- Controls and directs overspray into filtration systems
- Controls and exhausts VOCs from the work place
- Provides a cleaner system and paint finishes



FOR NON PRESSURIZED SPRAY BOOTHS

Power Saver

Power Saver is a control panel upgrade that allows the painter to slow the exhaust fan to half speed when not painting. Included is a variable frequency drive (VFD), which controls the fan motor speed, and a gun hanger switch, which is wired to the control panel. When the painter hangs the spray gun on the hook, the VFD will slow the fan to half speed. When the paint gun is taken off the hook, the fan returns to full speed.



Energy is conserved in two ways:

- Fan motor uses less electricity
- Booth exhausts less heated air during the cold months

Reduces airflow 50% during energy saving mode!

NOTE: In cases where an air makeup unit accompanies a non-pressurized spray booth, Power Saver will only control the spray booth.

Consta-Flow

The Consta-Flow System is designed to automatically adjust the exhaust fan to the changing conditions of the exhaust filters. GFS recommends Consta-Flow for all paint booths with conveyor openings and booths with multiple filter stages that have high static pressure when loading.



Consta-flow consists of a VFD, differential pressure gauge and sensing probes. The system monitors static pressure and adjusts the exhaust fans RPMs to what is needed for the volume of exhaust air, based on how loaded the filters are. The result is a booth with constant airflow as filters load up with paint, increasing filter life.

FOR PRESSURIZED SPRAY BOOTHS

Economizer

Economizer is a control panel upgrade for booths that have air makeup units directly pressurizing the booth. The upgrade includes an auto-balance system, VFD and gun hanger switch.



The VFD automatically adjusts the airflow of the exhaust fan(s) to ensure proper booth balance. The gun hanger switch, located inside the paint booth, controls the booth function from paint mode to energy saving mode. When the paint gun is hanging on the hook, the booth airflow slows to half speed. When the paint gun is removed from the hook, airflow resumes to full speed.

Economizer can only be used on new or existing booths with variable air volume air makeup units.

Reduces airflow 50% during energy saving mode!

A control panel purchased with Economizer will also automatically receive an Auto-Balance System, which keeps the booth balanced regardless of filter loading.

Auto-Balance

Recommended for all pressurized booths, Auto Balance is designed to keep the paint booth balanced while in operation. The system consists of a VFD, differential pressure gauge and sensing probes.



The Auto Balance System monitors the interior booth pressure and adjusts the exhaust fan RPMs to what is needed for the volume of exhaust air, based on what the incoming intake air is. The result is a booth that is balanced automatically and stays in balance as the filters load up with paint overspray. The system increases useful filter life, provides a constant airflow throughout the booth, and allows you to easily control the booth pressure.

Booth Accessories

BOOTHBOX 2™



Part No.
218-002

A magnetic, double compartment cabinet and double spray gun holder, the Booth Box 2 stores commonly used supplies within arm's reach in the spray booth. By eliminating time-wasting trips in and out of the spray booth, it helps increase efficiency and productivity.

SINGLE SPRAY GUNHANGER™



Part No.
218-004

This magnetic spray gun holder is designed to hold all types of spray guns and most types of air tools. A soft edge guard eliminates scratching of gun or gun cup.

BOOTHBOX MINI™

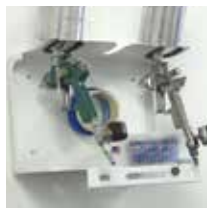


Part No.
218-006

BoothBox Mini is a magnetic, single compartment cabinet and double spray gun holder, designed

for the interior of spray booths. Increase efficiency and productivity by storing your needed painting items close at hand, and avoiding trips in and out of the booth during a paint job!

BOOTHSHELF WM™



Part No.
218-009

A magnetic, 3-position spray gun holder and vented working shelf combination. Use the BoothShelf WM™ anywhere in the spray booth, mixing room

or prep deck to hold spray guns, tape, tack cloth and other painting items for easy access while painting.

4 GUNHANGER™



Part No.
218-011

A magnetic, 4-position spray gun holder for spray booths, prep areas or anywhere in the shop. Also works great in paint mixing rooms. Equipped with a tape-holding hook for storing tape, spray gun wrenches and other needed items.

HOSE & GUNHANGER™



Part No.
218-013

A double spray gun holder and air hose hanger. Use for spray booths, prep areas or anywhere in the shop.

Equipped with a tape-holding hook for storing tape or other needed items.

MAGAHOOK™



Part No.
218-014

Part No.
218-015

Magahooks™ are useful in holding a variety of objects to a metal surface, such as a spray booth wall, parts caddy, locker etc.

TEST PANEL HOLDER™



Part No.
218-023

Simplify your test panel process! Attach paper or metal test panels, hold and spray! For flash and dry times, or everyday

storage, place the Test panel holder on the booth wall or other sheet metal surface by its magnets.

PUMP BOTTLE HOLDER™



Part No.
218-032

Double magnetic hook sized for the common degreaser bottles that are usually scattered

across prep carts, lying on the floor or hanging from any I edge available.

Use the Magnetic Pump Bottle Holder™ anywhere in the booth or prep area to keep bottles easily accessible. Also great for hanging a variety of pneumatic tools, spray guns and just about anything you can imagine!

MIRROR HANGER™



Part No.
218-033

Magnetic has proven itself as the best and easiest way to paint mirrors and other small parts. Simply hold the handle and paint the attached

mirror. Then place it on the powerful magnetic wall base between coats. No more hanging from wires!

CAUTION:

Each of the magnetic products is equipped with highly powerful magnets that will perform the task(s) intended for.

Always use caution with any magnetic product. Keep fingers and other important body parts away from the path of magnetic/metal contact! Never use any magnetic accessory on or near computer equipment.

Spray Booth Accessories by Karajen Corp.

Part No.	Description
218-002	Booth Box2 - 15"w, 14"h, 6.5"d
218-004	Single Spray GunHanger - 3"w, 5"d
218-006	Booth Box Mini - 14"w, 7.25"h, 6"d
218-009	Booth Shelf WM - 14"w, 10"h, 8.5"d
218-011	4 GunHanger - 7.5"w, 18.75"h, 7"d
218-013	Hose & GunHanger - 7.5"w, 18.75"h
218-014	Magahook - 2.65" Base, 3" Shaft, 65lb pull
218-015	Magahook 'U' Style - 2.65" Base, soft coated hook, 65 lb pull
218-023	Test Panel Holder with Clipboard
218-032	Pump Bottle Holder
218-033	Mirror Hanger
600-080	Standard Kit: 218-002, 218-006, 218-011, 218-013, 218-004, 218-014, 218-023
600-081	Economy Kit: 218-006, 218-013, 218-004, 218-014, 218-023

Booth Accessories

Overspray accumulates quickly on paint booth walls, floors and light fixtures. This is a highly flammable and spontaneous combustion hazard. Consider using the following items to reduce the amounts of buildup, and improve booth illumination and operator efficiency.

BOOTH INTERIOR PROTECTION

A specially engineered, adhesive-backed white material designed to protect walls and floors of a paint booth. Traps dust, dirt and overspray, as well as brightens the work area.



WALL & FLOOR PROTECTION

Part No.	Description
217-112	28" x 300 ft roll
217-110	Dispenser

FIRE RETARDANT FLOOR PAPER

Bright white floor protection ideal for spray operations. OSHA compliant.



Part No.	Description
217-081	36" x 500 ft. roll
217-083	60" x 500 ft. roll
217-084	72" x 500 ft. roll

STRIPPABLE BOOTH COATINGS

Fast-drying, solvent based, strippable coatings for spray booths, paint booths, industrial floors and various surfaces to protect it temporarily during industrial processes or material handling.



Part No.	Description
236-040	Clear, 5 gal. container
236-041	White, 5 gal. container

LIGHT FIXTURE PROTECTION

2-mil, plastic peel-off film with custom acrylic adhesive.



Part No.	Description
230-004	18" x 100 ft. roll
230-210	12" x 100 ft. roll
230-211	Dispenser

WALL CURTAINS

Separate and maximize your usable space with a retractable barrier for confining dust, dirt and contaminants and cold loss. Perfect for Industrial, Auto Body, Woodworking, and much more. All materials meet NFPA-701 fire retardancy.

- Create a safe work environment
- Eliminate costly permanent walls
- Heights of 8', 9' 10' & 12'
- Widths of 6', 12' & 24'
- Custom curtains are also available



Industrial



Auto Refinish



Part No.	Width x Height	Description
1210	10' x 12'	Curtain
9110	10' x 9'	Curtain
9111	11' x 9'	Front Curtain
8112	12' x 8'	Front Curtain
8112	12' x 8'	Front Curtain
9112	12' x 9'	Front Curtain
8321	21' x 8' 3"	Curtain
9121	21' x 9'	Side Curtain
11824	24' x 11' 8"	Curtain
81024	24' x 8' 10"	Center Curtain
8324	24' x 8' 3"	Curtain
9124	24' x 9'	Center Curtain
8327	27' x 8' 3"	Curtain
8830	30' x 8' 8"	Curtain
11836	36' x 11' 8"	Curtain

Booth Accessories

PAINT BOOTH PARTS HANGER SYSTEM

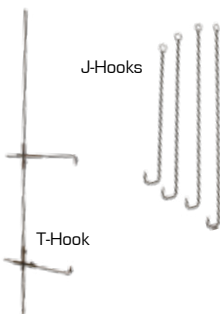
This flexible parts hanging system enables you to maximize the productivity of your paint booth. Sturdy construction ensures parts stay put, while the easily adjustable racks make positioning parts for easy spraying a snap.

Parts Hanger Systems	
Part No.	Description

Standard Parts Hanger Systems	
Includes support beam and single track with two J-Hooks	
PH-CS-10'14-Kit	10' x 14' for Ultra, Professional, and Vertex booths
PH-FS-10'10-Kit	10' x 10' for Performer booths

Deluxe Parts Hanger System	
Includes support beam, single track with two J-Hooks and two adjustable clamp and rod assembly's.	
PH-CD-10'14-Kit	10' x 14' for Ultra, Professional, and Vertex booths
PH-FD-10'10-Kit	10' x 10' for Performer booths

- Stand alone accessories available:
- Sliding Track & J-Hook
 - 24" Rod Assembly
 - 30" Rod Assembly
 - 36" Rod Assembly
 - 42" Rod Assembly
 - Adjustable Rod Assembly



ROTATING BOOTH ACCESS TABLE

Easily access your pre-mixed paint or other supplies from inside the paint booth by installing this rotating table into the wall that connects your paint booth to your mix room. Your paint and supplies stay out of the way until needed.



Rotating Table	
Part No.	Description
RS-SPA36108	for GFS dual skin panels
RS-SPA2420	for single skin retro-fit panel

LIGHT BOOSTING REFLECTOR



Increase the luminosity of your paint booth with this simple upgrade. The light reflectors can easily be installed behind the light tubes, increasing the luminosity of fixtures by 20%.

You can achieve the same level of luminosity with fewer bulbs than our competitors, saving energy and maintenance costs.

20% more light!

Only available for GFS 4-tube light fixtures.

PAINT BOOTH SOUND SYSTEM

Fill your paint booth with sound using Bluetooth connection! Professional grade audio equipment housed in a durable steel casing for protection. Custom-made speaker enclosures have been engineered for the harsh paint booth environment.

- Bluetooth receiver (music direct from your electronic device)
- 2 Polk Audio RCi650, in wall speakers
- X1000 Crown Amplifier
- Booth Exterior Amplifier shelving with USB port for easy battery charging



(2) Polk Audio RCi 650 Speakers

Compatible with:

PAINT BOOTH TOOL CABINET

Add extra storage capacity to your paint booth and keep tools & supplies clean and free of overspray. This 10 ft. cabinet is integrated in to the rear wall of your paint booth for a custom fit, without losing valuable working space inside your booth. Not available for retro-fit.

Cabinets feature heavy duty hardware and latches, and the walls are made from white pre-coated steel panels, just like the walls of GFS paint booths.



Booth Accessories



Adaptive to the changing demands of any shop, regenerative dryer systems use the latest technology to provide your facility with the cleanest, driest compressed air available. Choose from a variety of drying and regenerating processing systems.

REGENERATIVE DRYER SYSTEM:

Includes a water separator and oil coalescing filter, moisture minder automatic piston drains, mounting bracket, fittings to connect pre-filters to dryer, and drain tubing.



REGENERATIVE DRYER/FILTER PACKAGES:

50-CFM filter packages are assembled complete, for ease of use.

Regenerative Dryer Filter Packages

Part No.	Description
218-119	Water separator, oil coalescing filter and regulator
218-121	Oil coalescing filter and regulator
218-120	Water separator, oil coalescing filter, activated carbon filter and regulator



Regenerative Dryer Systems

Part No.	HP	Inlet/Outlet	H x D x W
218-100	10	1"/1"	30.5" x 11.5" x 23"
218-101	15	1"/1"	30.5" x 11.5" x 29"
218-102	20	1"/1"	30.5" x 11.5" x 35"
218-103	30	1"/1"	30.5" x 11.5" x 35"
218-104	50	1-1/2"/1-1/2"	50.5" x 24" x 46"

MEMBRANE DRYING SYSTEM:

Features a first-stage water separator with automatic float drain, and second-stage, oil coalescing filter with automatic float drain. Membrane dryer unit: 1/2" npt I/O, 23" h x 16" w x 5" h. High-flow piston regulator downstream.

Regenerative Dryer Filter

Part No.	Description
218-108	20-CFM Membrane Drying System



ULTRA DRYING SYSTEM:

Engineered to get you down to -40 degree dew point air. Air is dried and stored in an 80-gallon ASME receiver tank. Unique to this system, a one-way check valve enters the tank so dry air only flows out of the tank in one direction, where it is needed. There is also a high-flow precision regulator on the outlet of the tank.



ULTRA-FLO SPRAY HOSE:

Engineered to withstand high temperatures (bake cycles), preventing contamination to the paint like traditional rubber hoses. These hoses lay flat and slide easily without catching or coiling. An ANTI-static strip eliminates static build-up.

Hoses come with 1/4" NPT male pipe connections

Ultra-Flo Spray Hose

Part No.	Hose Length in Ft.
218-109	15
218-110	35
218-111	50



Regenerative Dryer Systems

Part No.	HP	Max. psi	Flow
218-105	15	175	40 scfm
218-106	20	175	80 scfm
218-107	30	175	120 scfm

Contact Global Finishing Solutions for information on additional Tsunami products.

Limited Warranty

Parts purchased from Global Finishing Solutions (GFS) that could fall under our limited warranty if operated, and maintained, and used under normal conditions, for a period of one (1) year from the date the part was shipped from the GFS facility in Osseo, WI. The obligation of GFS, and the Buyer's SOLE AND EXCLUSIVE REMEDY hereunder, shall be limited to one of the following, at GFS' option:

- (01) The repair or replacement of defective parts or components (collectively, the Parts) of the Equipment; provided. However, the Buyer shall be responsible for the payment of all labor costs associated with any such repair or replacement.
- (02) In the event GFS is unable to repair or replace the defective Parts, the Buyer shall be entitled to a refund of the cost of the Parts. GFS has no obligation under this Limited Warranty for ordinary wear and tear of the part; or if modified by any other person or organization.

Warranty Performance Procedures

Before any Parts can be returned to GFS, the Buyer must contact GFS and request a Return Authorization. Upon the Buyer's receipt of the Return Authorization form, the Parts may be shipped, freight prepaid, to the facility designated on the Return Authorization. All Parts returned for repair, replacement, or refund (a refund may be made in the form of a credit to the Buyer's account), must be accompanied by the Return Authorization. All returned parts are subject to a thirty percent (30%) handling charge. Parts manufactured or supplied by an OEM are subject to the warranties, if any provided by such OEM's; and repair or replacement of such Parts are subject to the approval of the OEM. The Buyer shall be responsible for the payment of any handling or restocking charges associated with OEM Parts.

Disclaimers of Warranties

The warranties contained herein are expressly in lieu of any other expressed or implied warranties, or any other obligation on the part of the seller, including without limitation, any implied warranty of merchantability or fitness for a particular purpose. Any models, drawings, plans, specifications, affirmation of fact, promises, or other communications by GFS with the reference to the equipment or the performance of the equipment are solely for the convenience of the Buyer and shall not in any way modify the expressed warranties and disclaimers set forth herein. The Buyer acknowledges it is purchasing the equipment solely on the basis of the commitments for GFS as expressly set forth herein. No agents or other parties are authorized to make any warranties on behalf of GFS or to assume for GFS any other liability or obligation in connection with the equipment.

WHO TO CONTACT

GFS has a Parts & Filters Department and a Customer Service Department that will help you with questions and concerns with products and parts. Call **800-848-8738** and follow the voice prompts for the correct department. You may leave a message on the voice mail system and someone will get back to you as soon as possible.

PARTS & FILTERS DEPARTMENT

All standard and custom products are designed and built by GFS. All parts are retained on file for immediate reference, replacement, and availability.

Pricing for Parts

Current prices and delivery costs will be quoted F.O.B. from Osseo, Wisconsin, Postal Code 54758.

Supplier to Stock New/Replacement Parts

For replacement parts and supplies, contact the Parts Department. We will help you locate your nearest distributor.

Ordering Replacement Parts

Have the following information BEFORE ordering:

- Product Model Number (located on the ID Plate on your product)
- Product Serial Number (located on the ID Plate on your product)
- Part Number & Description
- Quantity
- Purchase Order Number or Credit Card Number
- Preferred Shipping Method (UPS, Federal Express, Truck, Air, etc.)
- Complete Shipping and Billing Address

CUSTOMER/TECHNICAL SERVICE

GFS provides ongoing customer and technical support for its customers. You can reach a customer service representative during regular business hours.

Returning Parts

All goods to be returned for credit or exchange must be accompanied by a Return Goods Authorization form. Call GFS to request form. Goods are subject to a 30% handling charge.

Special non-stock items can be accepted only with the approval of our suppliers and are subject to any additional handling and restocking charges.

Availability and Service

Critical operational parts for productions and customer safety will be shipped overnight when possible.

Operation and Maintenance Manuals

GFS includes an electronic copy of the operation & maintenance manual with each job. You may purchase additional electronic or printed manuals by contacting customer service.

Other Services

- Installation questions
- Arrange for an installation
- Arrange for a service call
- Notify GFS of undelivered parts or other shipment problems



GLOBAL FINISHING SOLUTIONS

GLOBAL FINISHING SOLUTIONS • **800-848-8738** • WWW.GLOBALFINISHING.COM

© 2014 Global Finishing Solutions®. All Rights Reserved.

ACCESSORIES 01102014